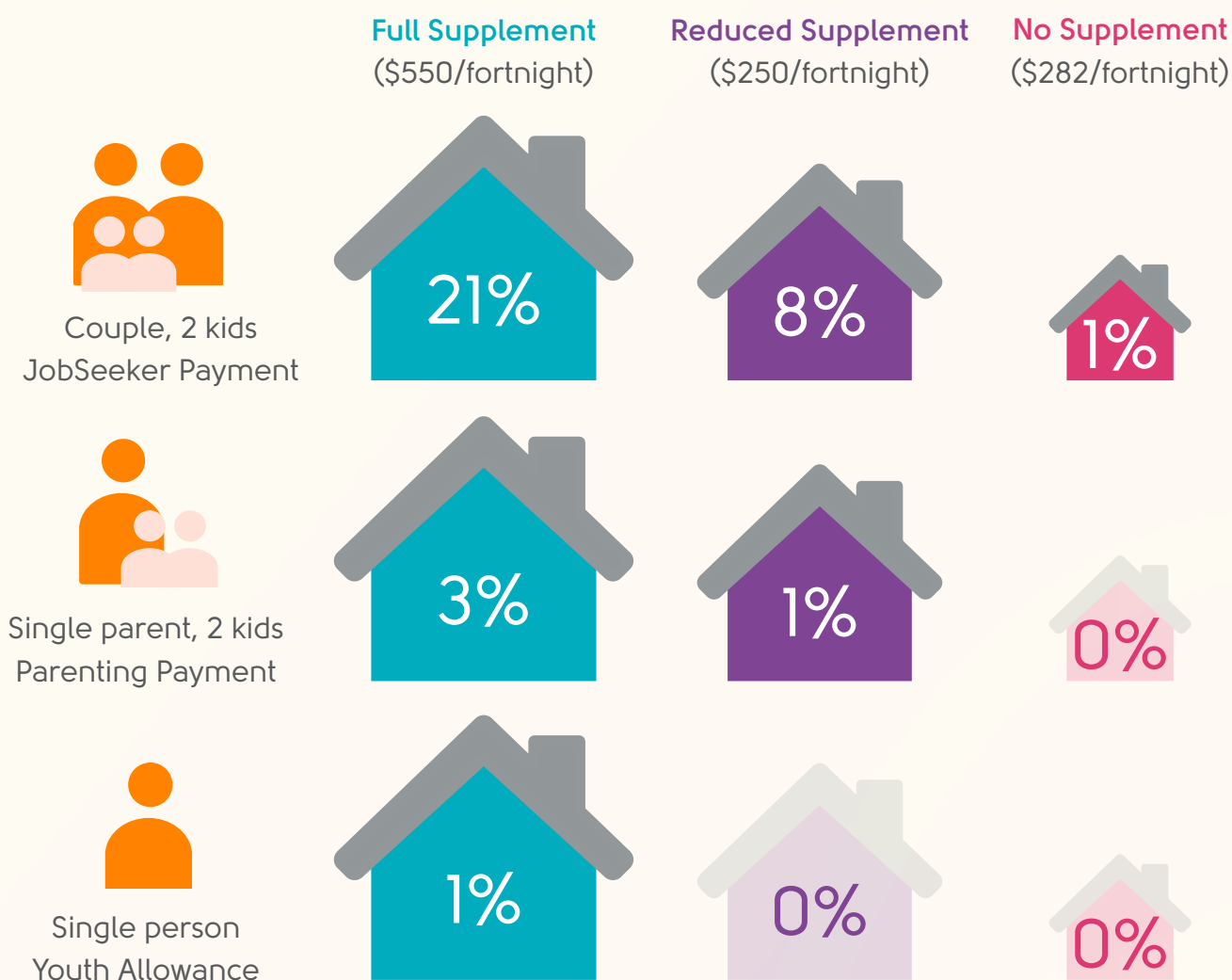




Rental affordability for JobSeekers

Anglicare WA conducted a special edition of the Rental Affordability Snapshot in August 2020 to highlight the percentage of affordable rental properties for households on JobSeeker and other payments, including the COVID-19 supplementary payment. The supplement is due to be reduced in September 2020.

Percentage of affordable rental properties available on:



What needs to change

Permanently raise the base rate of JobSeeker, Youth Allowance and Parenting Payments above the poverty line to ensure that all Western Australians can access adequate housing.