

# WHAT KIND OF ADVOCATE ARE YOU?

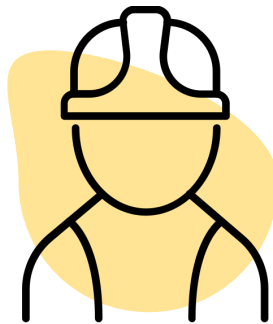
*In our communities we know that there are numerous different peoples with varying personality types that when brought together can create a great Team for Change.*

*We've created five different advocate personas; The Guardian, The Builder, The Commander, The Experimenter and The Imaginator. Each one having an important role in advocating for change within our community.*



**The  
Guardian**

- Behind the scenes legends
- Provides support
- Great mediator



**The  
Builder**

- Hands on approach
- Practical solutions
- Grass roots approach working with start-ups



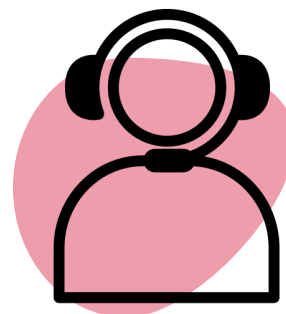
**The  
Commander**

- Stand Up, Speak Up, Show Up
- Risk taker
- Empowers others



**The  
Experimenter**

- Researching (all about the facts)
- Creating questions, issues and stories for a wider picture
- Not afraid to dig



**The  
Imaginator**

- Creative individuals who share their knowledge in an alternative artsy way
- Spreads news, information and ideas
- Public speaking

For more information on how to become an advocate, visit [anglicarewa.org.au](http://anglicarewa.org.au) or **sign up to our newsletter.**