

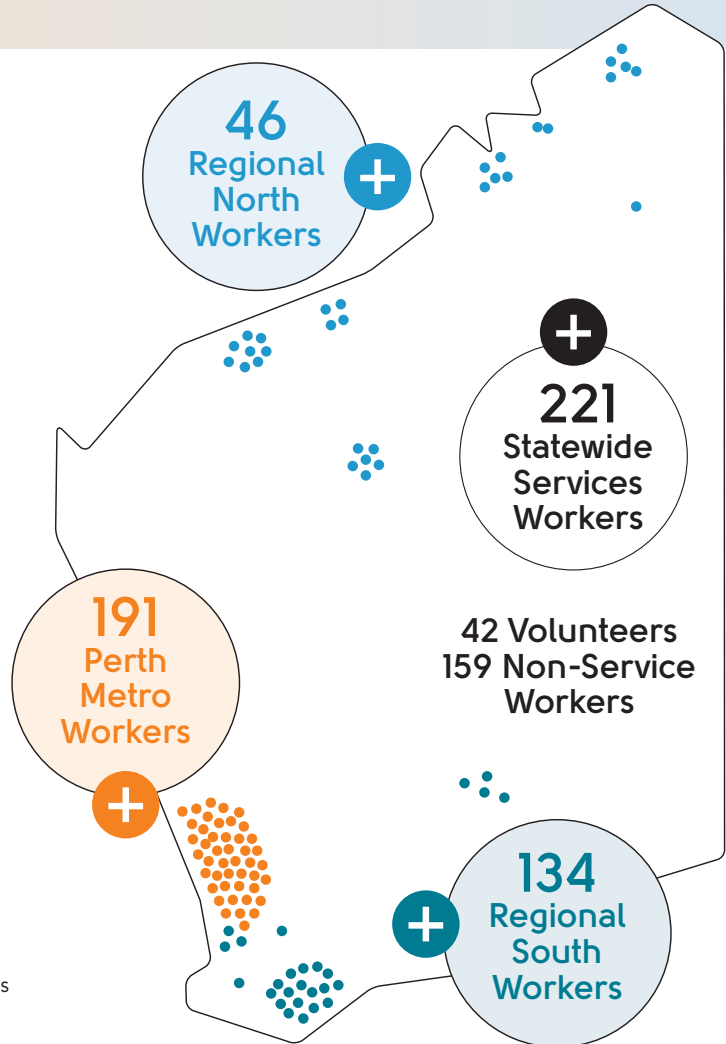
Impact



In 2023-24 we reached
82,302
Western Australians

Of this number, we supported
46,108 Western Australians
through **100** direct services in
153 locations. This included
30,994 children and young
people, and **6,842** people
who identified as First Nations.

We provide place-based services that cater to the unique needs of regional areas, along with expansive Statewide services that encompass a broad and diverse geographical reach.



4,022

People supported through Family and Domestic Violence services



18,803

Parents and care givers supported through Parenting services



1,490

Young people supported through Youth Housing services



1,878

People supported with Mental Health and Wellbeing services



30,785

People supported through Financial Counselling and Wellbeing services



100

People living with disability supported with individual programs