



Reach Review

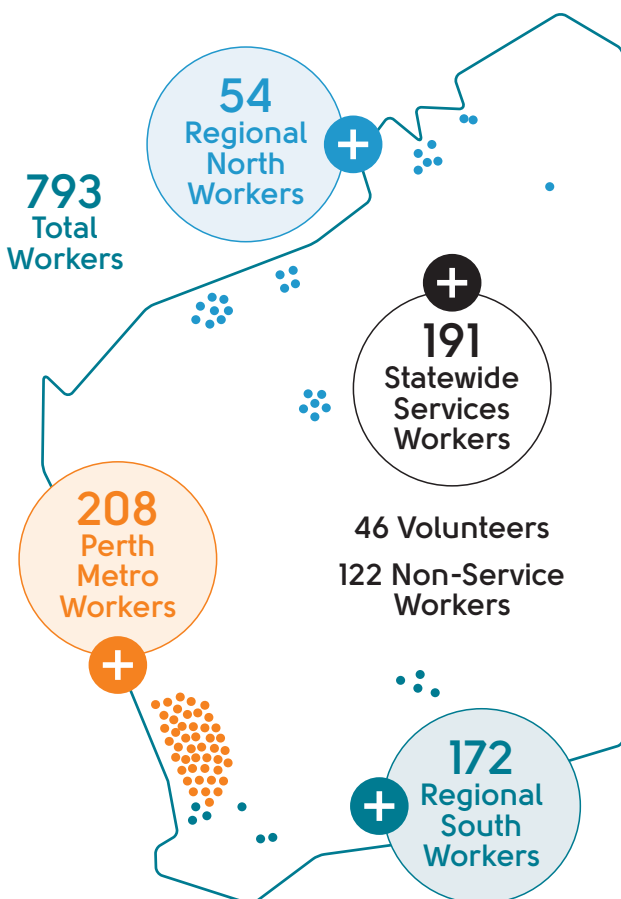
We provided 101 services across Western Australia

102,981 Western Australians reached in 2024–25

We supported 52,408 Western Australians through direct service provision and engaged with 50,573 people through community capacity building events, innovation projects, school education programs and other initiatives.

In total we reached 102,981 people across 101 services over 201 locations, an increase of 20,679 people reached compared to 2023–24.

Of the Western Australians we reached 9,583 identified as Aboriginal and Torres Strait Islander people.



3,339

People supported by Family & Domestic Violence services



24,923

Parent and caregivers were supported through parenting services



9,578

People supported with Mental Health and Wellbeing services



1,469

Young people supported with Youth Housing services



37,073

People supported by Financial Counselling and Wellbeing services



100

People living with disability supported with individual programs